

CONFIDENTIAL INFORMATION: THIS DOCUMENT AND CONTAINED INFORMATION ARE THE PROPERTY OF RUSSTECH ENGINEERING COMPANY, INC. THE RECIPIENT, BY RECEIPT AND RETENTION HEREOF, ACKNOWLEDGES THAT THE INFORMATION RECEIVED IS CONFIDENTIAL, DEVELOPED OVER TIME AT SIGNIFICANT EXPENSE, AND THAT DISCLOSURE THEREOF TO THIRD PARTIES WILL CAUSE IRREPARABLE HARM TO RUSSTECH. THE RECIPIENT BY THE RECEIPT AND RETENTION OF SUCH INFORMATION, AGREES TO MAINTAIN SUCH INFORMATION IN CONFIDENCE, TO NOT DISCLOSE IT TO THIRD PARTIES, AND TO RETURN IT, AND ALL COPIES OR DERIVATIVES THEREOF, IN ANY FORM, TO RUSSTECH, UPON REQUEST.

REVISION HISTORY						
ZONE	REV	DESCRIPTION	CHECKED BY	DATE	APPROVED BY	DATE
--	A	INITIAL RELEASE, SUPERSEDES RC11070-S.	--	--	--	--

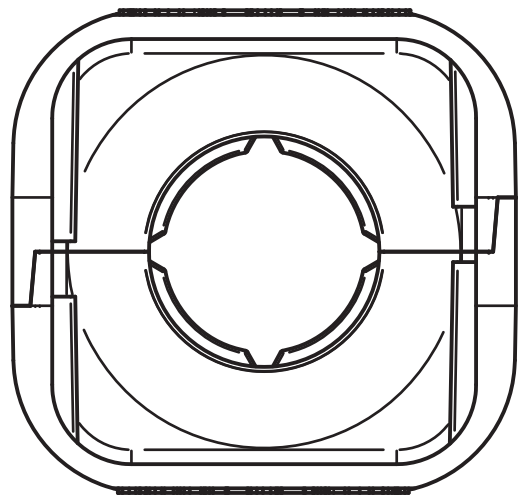
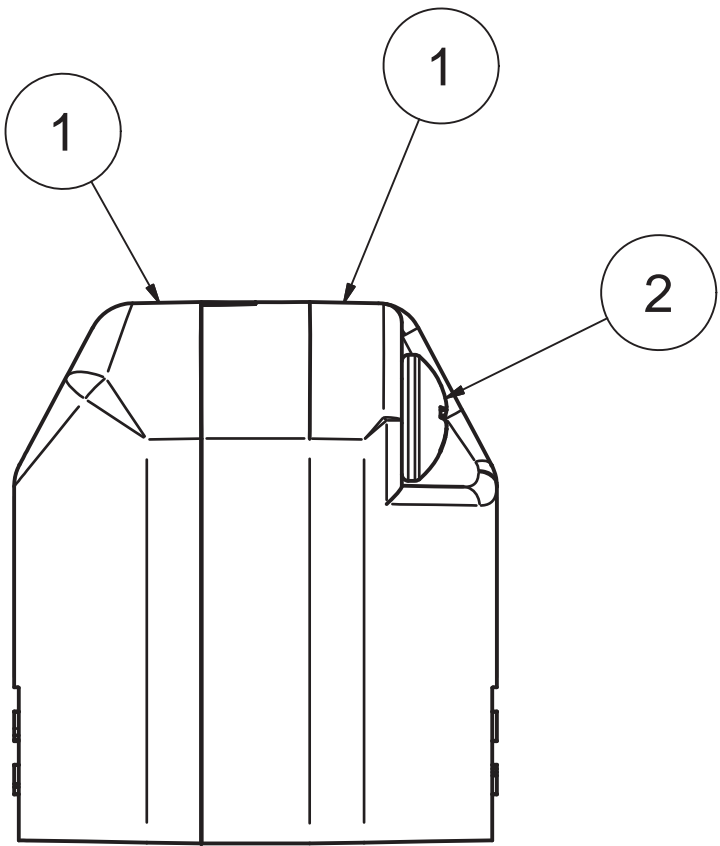
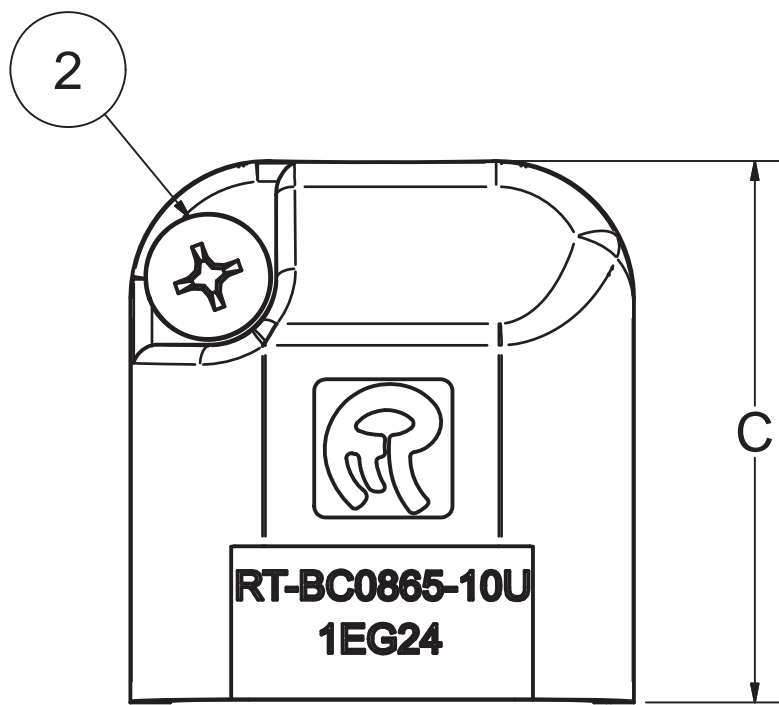
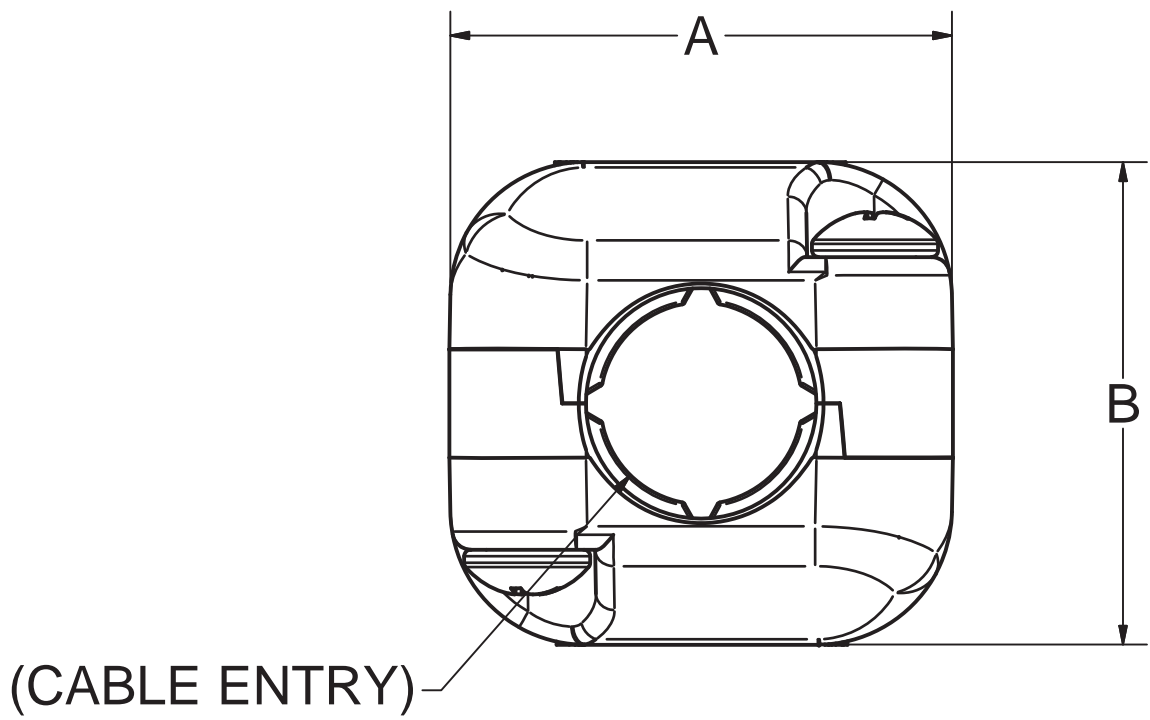
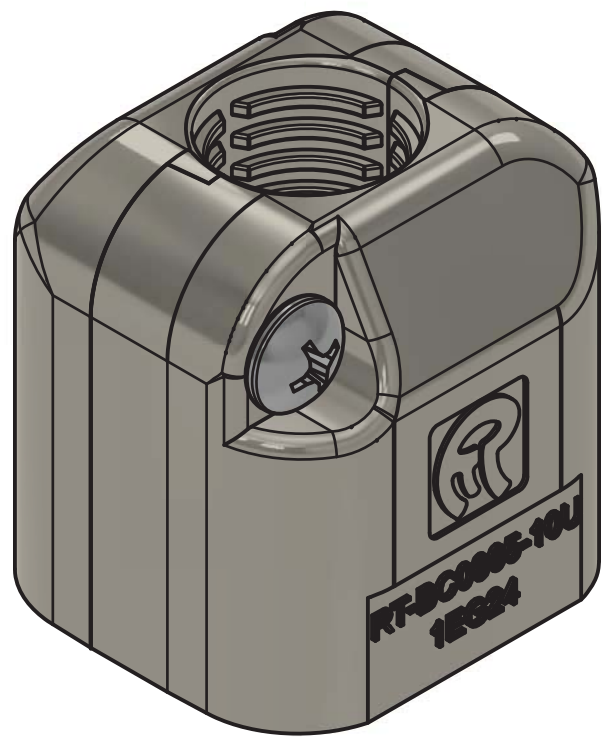


TABLE 1						
DASH NO.	CABLE ENTRY REF. ONLY	CABLE O.D. REF. ONLY	WEIGHT (LBS) REF. ONLY	A	B	C
-10U	[10]	0.15-0.40	0.015	0.87	0.84	0.94



NOTES:


- DIMENSIONS APPLY AFTER FINISH
- MATERIAL:
 - BACKSHELL: ULTEM-2310
 - ADAPTOR CLIP: ULTEM-2310
 - HARDWARE: STAINLESS STEEL
- FINISH:
 - BACKSHELL: ELECTROLESS NICKEL PLATE
 - ADAPTOR CLIP: ELECTROLESS NICKEL PLATE
- PACKAGE TO PREVENT DAMAGE
- IDENTIFY AS SHOWN

[5.1] PART NUMBER TO READ:

RT-BC0865-10U

- DENOTES COMPOSITE CONSTRUCTION
- CABLE ENTRY SIZE (MM)
- PRODUCT FAMILY BASE NUMBER
- BASE PREFIX

- ASSEMBLY HARDWARE INCLUDED
- SIZE #1 PHILLIPS DRIVER BIT RECOMMENDED

2	2	4X1/2-PNPH-TRSS	SCREW, TRILOBULAR, THREAD CUTTING, 1/2" LENGTH	RUSSTECH
1	2	RT-BC0865-10U-H	EN4165 COMPOSITE EMI BACKSHELL, STRAIGHT EXIT	RUSSTECH
ITEM	QTY	PART NUMBER	DESCRIPTION	MFG
PARTS LIST				
TECHNICAL REFERENCE		 RUSSTECH ENGINEERING COMPANY, INCORPORATED 4416 RUSSELL ROAD, SUITE A MUKILTEO, WA 98275, USA		
UNLESS OTHERWISE SPECIFIED DIMENSIONS ARE IN DECIMAL INCHES WITH METRIC IN BRACKETS TOLERANCES ARE: .X ± 0.1 .XX ± 0.03 .XXX ± 0.010 ANGLES ± 0.5° REMOVE ALL BURRS & SHARP EDGES		APPROVALS DRAWN BY E. CHUNG 6/24/2025 CHECKED BY Wm Bryon Duncan 2025.06.30 09:53:34 -07'00' ENGINEER Edward Chung 2025.06.30 09:53:07 -07'00' APPROVED BY Ben Lebson 2025.06.30 10:56:19 -07'00'		TITLE MONO MODULAR EN4165 / BACC65 / ARINC 809 BACKSHELL EMI, COMPOSITE, STRAIGHT EXIT
		SIZE	D	
		CAGE CODE	1EG24	
		DRAWING NUMBER	RT-BC0865-S	
SCALE		3 : 1	AUTODESK-INVENTOR	DEPARTMENT
SHEET		1/1	SALES	REV.
A		A		