



RUSSTECH

ENGINEERING

Russtech Engineering Co., Inc.
4416 Russell Rd., Suite A
Mukilteo, WA 98275
PH (855) RUSSTECH
www.russtechengineering.com

D-Sub Composite Backshell - Straight

D-SUB COMPOSITE EMI BACKSHELL KIT

Russtech has developed the Lightest-Weight, Most Rugged, Lowest Profile, EMI Shielding Backshell System ever introduced to the Aerospace Markets. Specifically designed for Commercial Aircraft Cabin Systems, it's the best option for Industrial, Automation, and Medical applications as well! Using highly engineered Composite Alloys, coupled with the most effective and durable EMI coatings, these accessories have been designed and manufactured to exceed your application requirements, and at the LOWEST possible cost.



Features

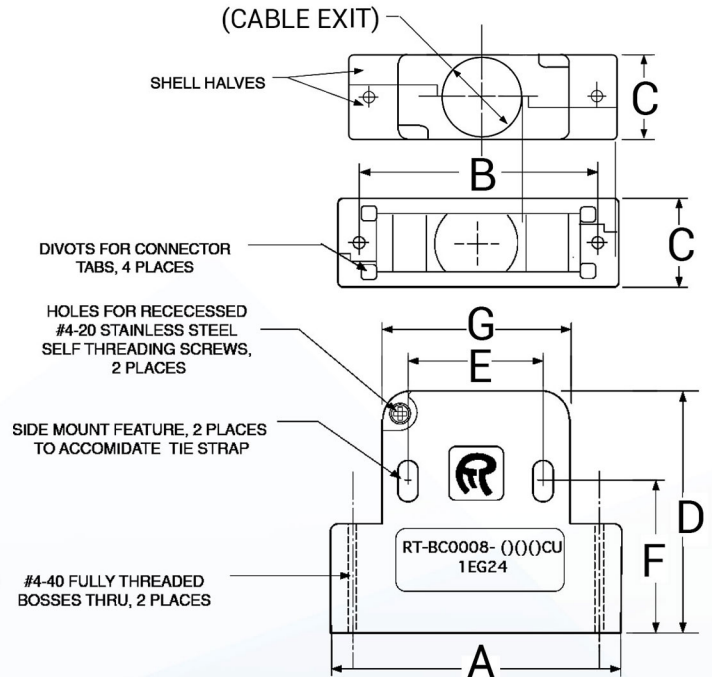
- COMPOSITE CONSTRUCTION - Strong, Lightweight, and Robust design.
- PROPRIETARY EMI COATINGS
- SUPERIOR STRAIN RELIEF - Push, pull and rotational strain relief.
- OPTIMIZED GEOMETRY - Optimized backshell geometry for ease of connector termination.
- CABLE ACCOMODATIONS- Allows for termination of a wide range of cable diameters.

INFLITE
COMPOSITE EMI BACKSHELL SYSTEM



D-Sub Composite Backshell - Straight

D-SUB COMPOSITE EMI BACKSHELL KIT



TECHNICAL SPECS

RT-BC0008-(_)CU, D-SUBMINIATURE COMPACT COMPOSITE EMI BACKSHELL KIT, STRAIGHT

Dash No.	Cable Exit (MM) Reference Only	Cable O.D. Size (Inch)	Connector Size	Backshell Weight (lbs) ±.010 Ref. Only	A Max Inches	B ± .005 Inches	C ± .020 Inches	D ± .020 Inches	E ± .010 Inches	F ± .010 Inches	G ± Max Inches
-091CU ₁	9	.15 - .36	1	.021	1.240	.984	.560	1.300	.480	.715	.750
-092CU ₂	9	.15 - .36	2	.024	1.560	1.312	.590	1.300	.730	.807	1.010
-152CU ₂	15	.30 - .58	2	.024	1.560	1.312	.590	1.300	.730	.807	1.010
-123CU ₂	12	.20 - .48	3	.032	2.110	1.852	.590	1.300	1.155	.696	1.485
-163CU ₂	16	.40 - .65	3	.032	2.110	1.852	.590	1.300	1.155	.696	1.485
-164CU ₂	16	.40 - .65	4	.041	2.760	2.500	.590	1.300	1.625	.935	2.165
-165CU ₂	16	.40 - .65	5	.048	2.660	2.406	.680	1.300	1.682	.807	2.125

NOTES:

- EACH BACKSHELL ASSEMBLY CONTAINS 2 SHELL HALVES AND HARDWARE ITEM SHOWN.
- BACKSHELLS ARE SUITABLE FOR "D" SUB TYPE CONNECTORS IN SHELL SIZES 1,2 3 4 & 5.

MATERIALS

- SHELL HALVES - MOLDED COMPOSITE COMPOUND
- FINISH - DOUBLE SIDED ELECTROLESS NICKEL PLATING
- INCLUDED HARDWARE - TRILOBULAR SELF-THREADING SCREWS, STAINLESS STEEL
- ALL MATERIALS RoHS COMPLIANT.

TABULATION NOTES:

- Refer To Dimension References A Through G.
 C = Denotes part is a compact design.
 U = Denotes part is of Composite Construction.
 1 Alternate Side Mount Feature shall have thru holes that accommodate MS3367-4 miniature tie strap (hole shall be Ø 0.115 inches).
 2 Side Mount Feature shall have slots as shown that accommodate MS3367-1 tie strap (diameter shall be .225 x .115 inches).

ASSEMBLY INSTRUCTION:

- TERMINATE WIRES TO CONNECTOR AND PREPARE CABLE SHEILD AS REQUIRED.
- HOLD BACKSHELL HALVES TOGETHER MAKING SURE THE SHEILDING ENGAGES THE INTERNAL CABLE ENTRY EMI RIDGES, AND INSTALL BOTH SELF THREADING SCREWS. TAKE CARE TO NOT OVER TORQUE.

RUSSTECH PART NUMBER EXPLANATION

RT - BC0008-() ()

