



RUSSTECH

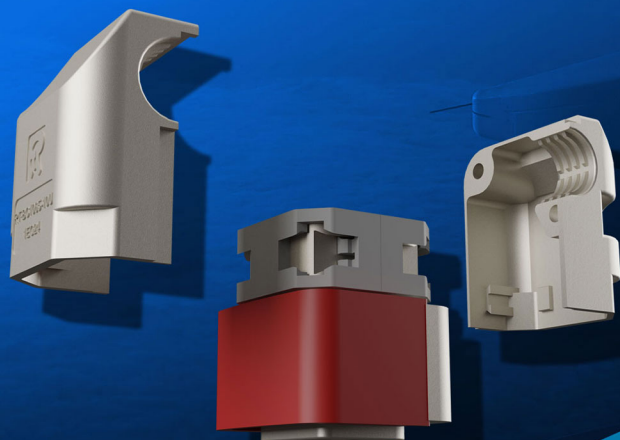
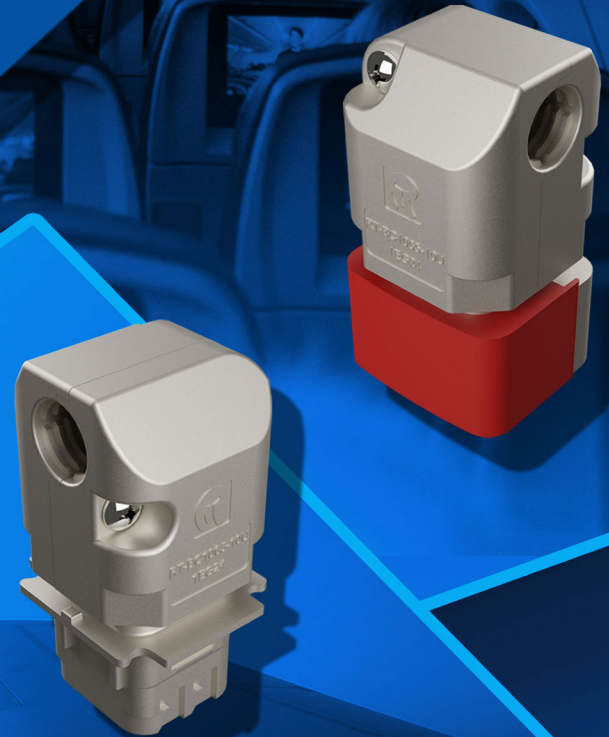
ENGINEERING

Russtech Engineering Co., Inc.
4416 Russell Rd., Suite A
Mukilteo, WA 98275
PH (855) RUSSTECH
www.russtechengineering.com

90° BACKSHELL

EN4165-ARINC 809-BACC65

Introducing a revolutionary ARINC 809-BACC65/EN4165 backshell design that is the lightest and strongest in the industry. This precision design incorporates a full perimeter EMI/RFI lip which virtually eliminates conducted and radiated emissions. The cable entry is carefully designed to provide superior push, pull and rotational strain relief while being optimized for both larger and smaller wire bundles. The backshell geometry is specifically designed to avoid interferences when utilizing nut plates and screws with a disconnect mounted receptacle and allows for ease of connector termination. An exclusive cable exit choice (CEC) design allows the 90 and 45 degree options to each utilize a single part number that can be installed in any of the four exit orientations on both the receptacle and plug connectors. This unique RUSSTECH innovation adds design and installation flexibility options that other brands can't match, eliminating the potential for error and resulting in first-time-right engineering designs.

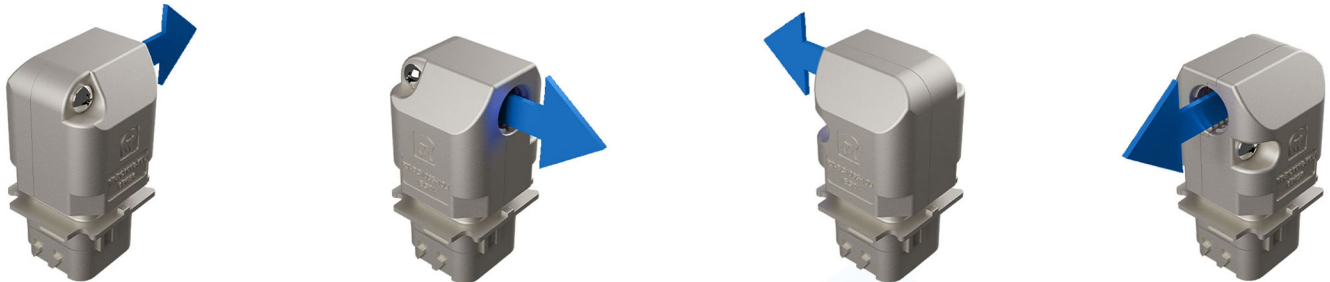


Features

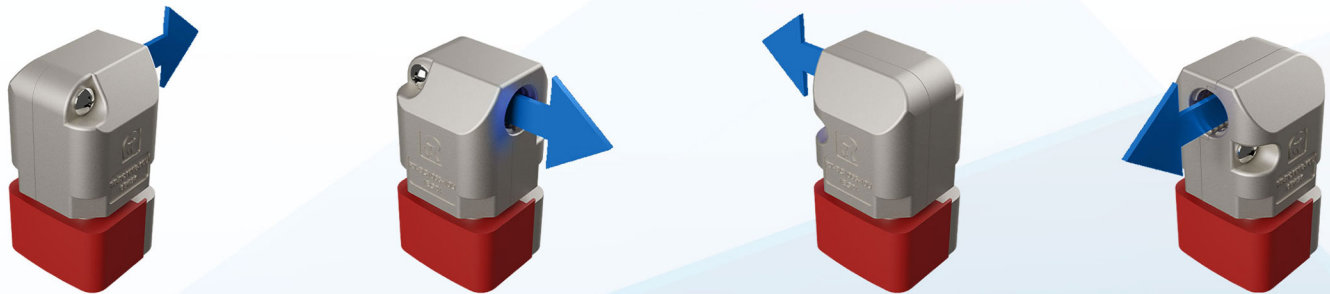
- **CABLE EXIT CHOICE (CEC)** - This unique RUSSTECH innovation for 90 and 45 degree backshells utilizes a single part number for all four exit orientations on both receptacle and plug.
- **COMPOSITE CONSTRUCTION** - Strong, Lightweight, and Robust design.
- **PROPRIETARY EMI COATINGS**
- **SUPERIOR STRAIN RELIEF** - Push, pull and rotational strain relief.
- **OPTIMIZED GEOMETRY** - Optimized backshell geometry for ease of connector termination.
- **CABLE ACCOMODATIONS** - Allows for termination of a wide range of cable diameters.

INFLITE
COMPOSITE EMI BACKSHELL SYSTEM





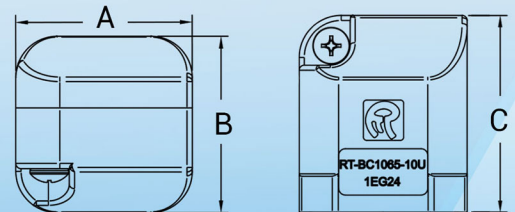
CABLE EXIT CHOICE ON PLUG AND RECEPTACLE WITH A SINGLE PART NUMBER



TECHNICAL SPECS

RT-BC1065-(_)U, MONO MODULAR EN4165 / BACC65 / ARINC 809 BACKSHELL, EMI, COMPOSITE , 90°

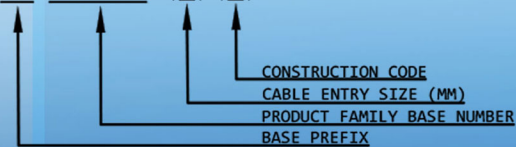
Dash No.	Cable Entry (MM) Reference Only	Cable O.D. Size (Inch)	Backshell Weight (lbs) ±.010 Ref. Only	A ±.03 Inches	B ±.03 Inches	C ±.03 Inches
-10U	10	.15 - .40	.026	1.00	1.00	1.17



*DIMENSIONS APPLY AFTER FINISH

RUSSTECH PART NUMBER EXPLANATION

RT-BC1065-() ()



MATERIALS:

- BACKSHELL: COMPOSITE
- HARDWARE: STAINLESS STEEL

FINISH:

- BACKSHELL: ELECTROLESS NICKEL PLATED
- ASSEMBLY HARDWARE INCLUDED
- SIZE #1 PHILLIPS DRIVER BIT RECOMMENDED

