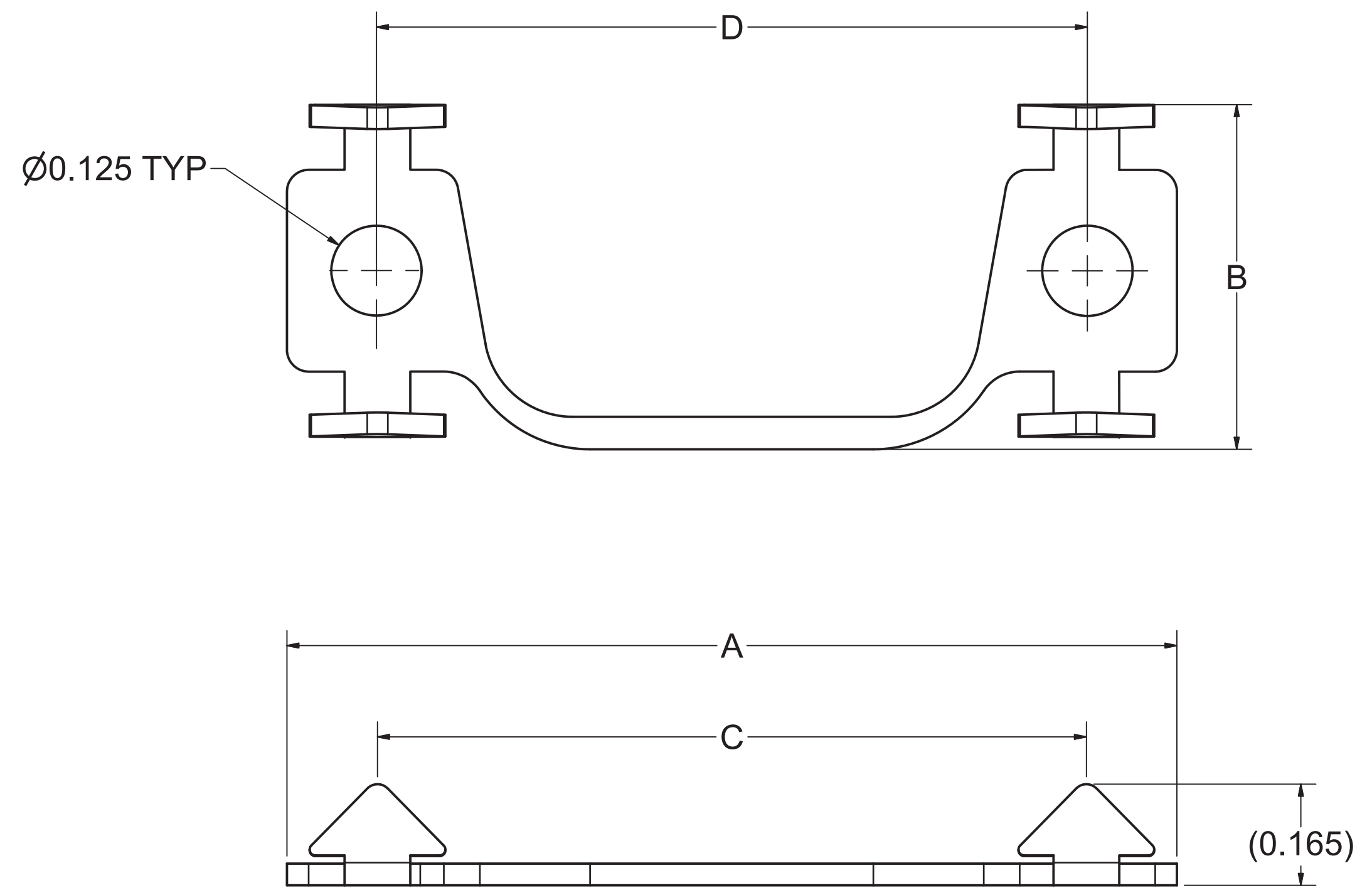


8 7 6 5 4 3 2 1

CONFIDENTIAL INFORMATION: THIS DOCUMENT AND CONTAINED INFORMATION ARE THE PROPERTY OF RUSSTECH ENGINEERING COMPANY, INC. THE RECIPIENT, BY RECEIPT AND RETENTION HEREOF, ACKNOWLEDGES THAT THE INFORMATION RECEIVED IS CONFIDENTIAL, DEVELOPED OVER TIME AT SIGNIFICANT EXPENSE, AND THAT DISCLOSURE THEREOF TO THIRD PARTIES WILL CAUSE IRREPARABLE HARM TO RUSSTECH. THE RECIPIENT, BY THE RECEIPT AND RETENTION OF SUCH INFORMATION, AGREES TO MAINTAIN SUCH INFORMATION IN CONFIDENCE, TO NOT DISCLOSE IT TO THIRD PARTIES, AND TO RETURN IT, AND ALL COPIES OR DERIVATIVES THEREOF, IN ANY FORM, TO RUSSTECH, UPON REQUEST.

REVISION HISTORY						
ZONE	REV	DESCRIPTION	CHECKED BY	DATE	APPROVED BY	DATE
B6	A	FIXED TYPOS IN DIMENSIONS TABLE.	B. DUNCAN	4/27/22	B. COLLINS	4/27/22
-	B	REVISED PER ECO00052.	Wm Bryon Duncan	9/27/23	Ben Lebson	9/27/23



DIMENSIONS (INCHES)					
PART NUMBER	CONNECTOR BACKSHELL SIZE	A INCHES	B INCHES	C INCHES	D INCHES
RA-LT0024-201A	1	1.23	0.48	0.98	0.98
RA-LT0024-202A	2	1.56	0.48	1.31	1.31
RA-LT0024-203A	3	2.10	0.48	1.85	1.85
RA-LT0024-204A	4	2.75	0.48	2.50	2.50
RA-LT0024-205A	5	2.65	0.59	2.40	2.40
RA-LT0024-206A	6	2.75	0.64	2.50	2.50

- NOTES:**
- DIMENSIONS APPLY AFTER FINISH
 - MATERIAL: 304 ANNEALED STAINLESS STEEL, 0.030 THICK
 - FINISH: N/A
 - PACKAGE TO PREVENT DAMAGE
 - IDENTIFY AS SHOWN
 - RECOMMEND USE OF 4-40 PHILIPS PAN HEAD SCREW (EXAMPLE: MS51957-14)
 - 6.1 RA-LT0024-20XA PART NUMBER DOES NOT INCLUDE HARDWARE
 - 6.2 RA-LT0024-20XAH PART NUMBER DOES INCLUDE HARDWARE (QTY 2, MS51957-14 SCREWS)
 - IT IS THE USERS RESPONSIBILITY TO ENSURE PROPER CONTACT ENGAGEMENT
 - INSTALL MOUNTING SCREWS USING 5-7 IN-LBF OF TORQUE MAX
 - INSTALL BOTH SCREWS LOOSELY BEFORE FULLY TIGHTENING THEM TO THE RECOMMENDED TORQUE IN NOTE 8. FOLLOWING THIS REQUIREMENT ENSURES THE RECEIVER IS PROPERLY ALIGNED AND WON'T SPIN/BEND WHEN THE FIRST SCREW IS FULLY TIGHTENED

TECHNICAL REFERENCE		RUSSTECH ENGINEERING COMPANY, INCORPORATED 4416 RUSSELL ROAD, SUITE A MUKILTEO, WA 98275, USA			
UNLESS OTHERWISE SPECIFIED DIMENSIONS ARE IN DECIMAL INCHES WITH METRIC IN BRACKETS TOLERANCES ARE: .X ± 0.1 .XX ± 0.03 .XXX ± 0.010 ANGLES ± 0.5° REMOVE ALL BURRS & SHARP EDGES	APPROVALS		SLIDE LATCH RECEIVER LOW PROFILE, STYLE A APPROX. PANEL THICKNESS: 0.03125" TO 0.0625"		TITLE SLIDE LATCH RECEIVER
	DRAWN BY J. WON 11/22/2021				
	CHECKED BY B. COLLINS 1/3/2022				
	ENGINEER B. LEBSON 1/3/2022				
APPROVED BY J. GILMAN 1/3/2022		SIZE: D SCALE: 6 : 1	CAGE CODE: 1EG24 SCALE: 6 : 1	DRAWING NUMBER: RA-LT0024-20XA-S DEPARTMENT: ENGINEERING	REV: B SHEET: 1/1