

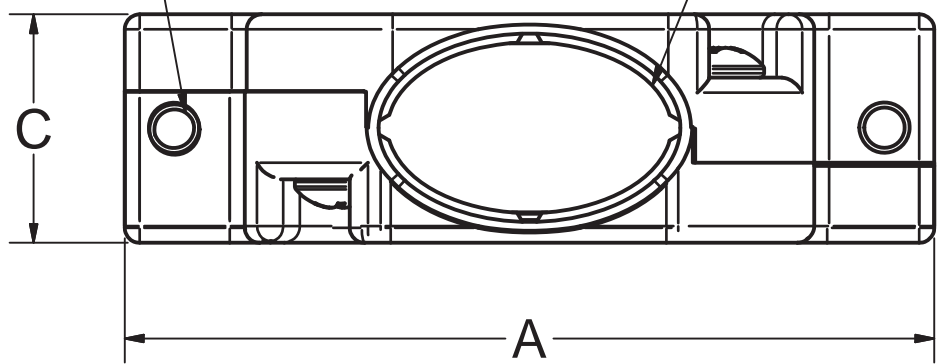
CONFIDENTIAL INFORMATION: THIS DOCUMENT AND CONTAINED INFORMATION ARE THE PROPERTY OF RUSSTECH ENGINEERING COMPANY, INC. THE RECIPIENT, BY RECEIPT AND RETENTION HEREOF, ACKNOWLEDGES THAT THE INFORMATION RECEIVED IS CONFIDENTIAL, DEVELOPED OVER TIME AT SIGNIFICANT EXPENSE, AND THAT DISCLOSURE THEREOF TO THIRD PARTIES WILL CAUSE IRREPARABLE HARM TO RUSSTECH. THE RECIPIENT BY THE RECEIPT AND RETENTION OF SUCH INFORMATION, AGREES TO MAINTAIN SUCH INFORMATION IN CONFIDENCE, TO NOT DISCLOSE IT TO THIRD PARTIES, AND TO RETURN IT, AND ALL COPIES OR DERIVATIVES THEREOF, IN ANY FORM, TO RUSSTECH, UPON REQUEST.

#4-40 TAPPED REAR MOUNTING HOLES X2

(CABLE ENTRY)

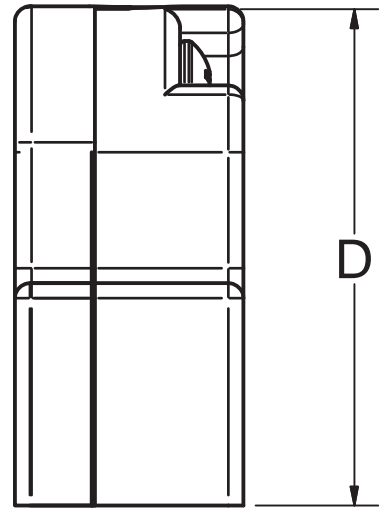
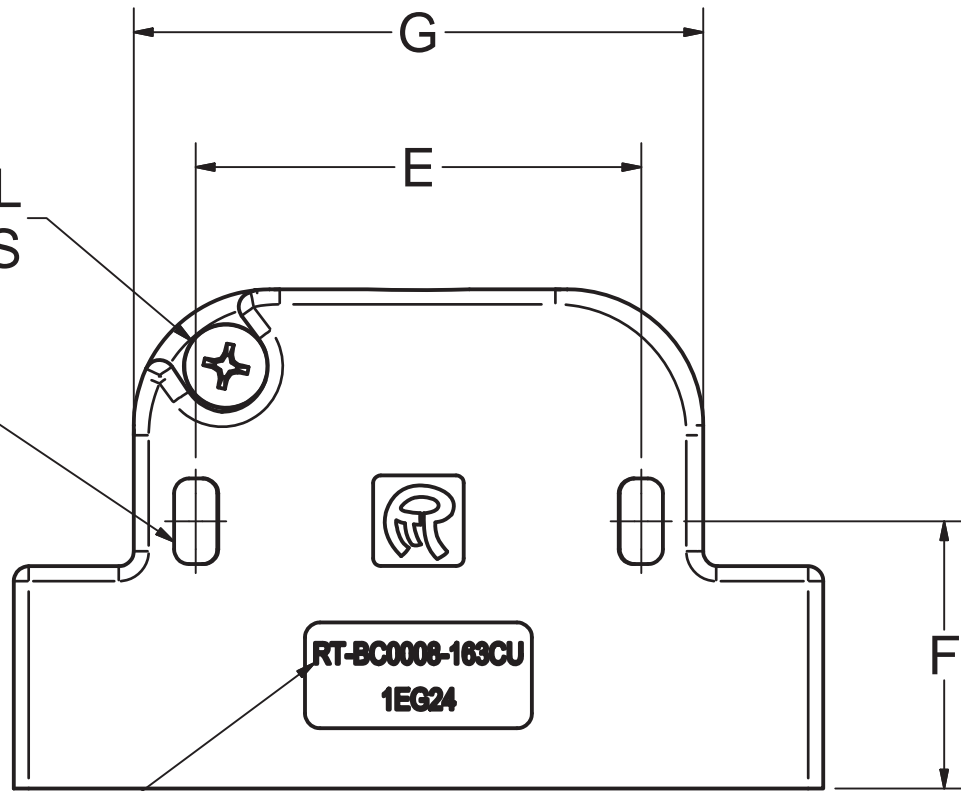
REVISION HISTORY

ZONE	REV	DESCRIPTION	CHECKED BY	DATE	APPROVED BY	DATE
--	A	INITIAL RELEASE.	--	--	--	--

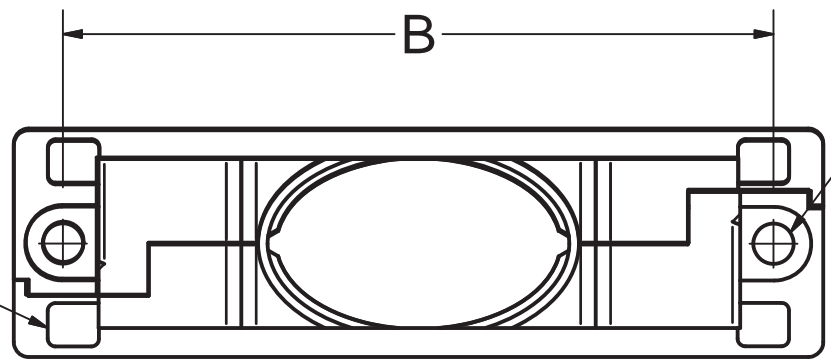


#4-20 STAINLESS STEEL
SELF THREADING SCREWS

SIDE MOUNT FEATURE, 2 PLACES
4-40 THRU HOLES FOR SIZE 1
(FITS MS3367-4 MINIATURE TIE STRAP)
OR SLOTS FOR ALL OTHER SIZES (.225 X .115)
FOR MS3367-1 TIE STRAP

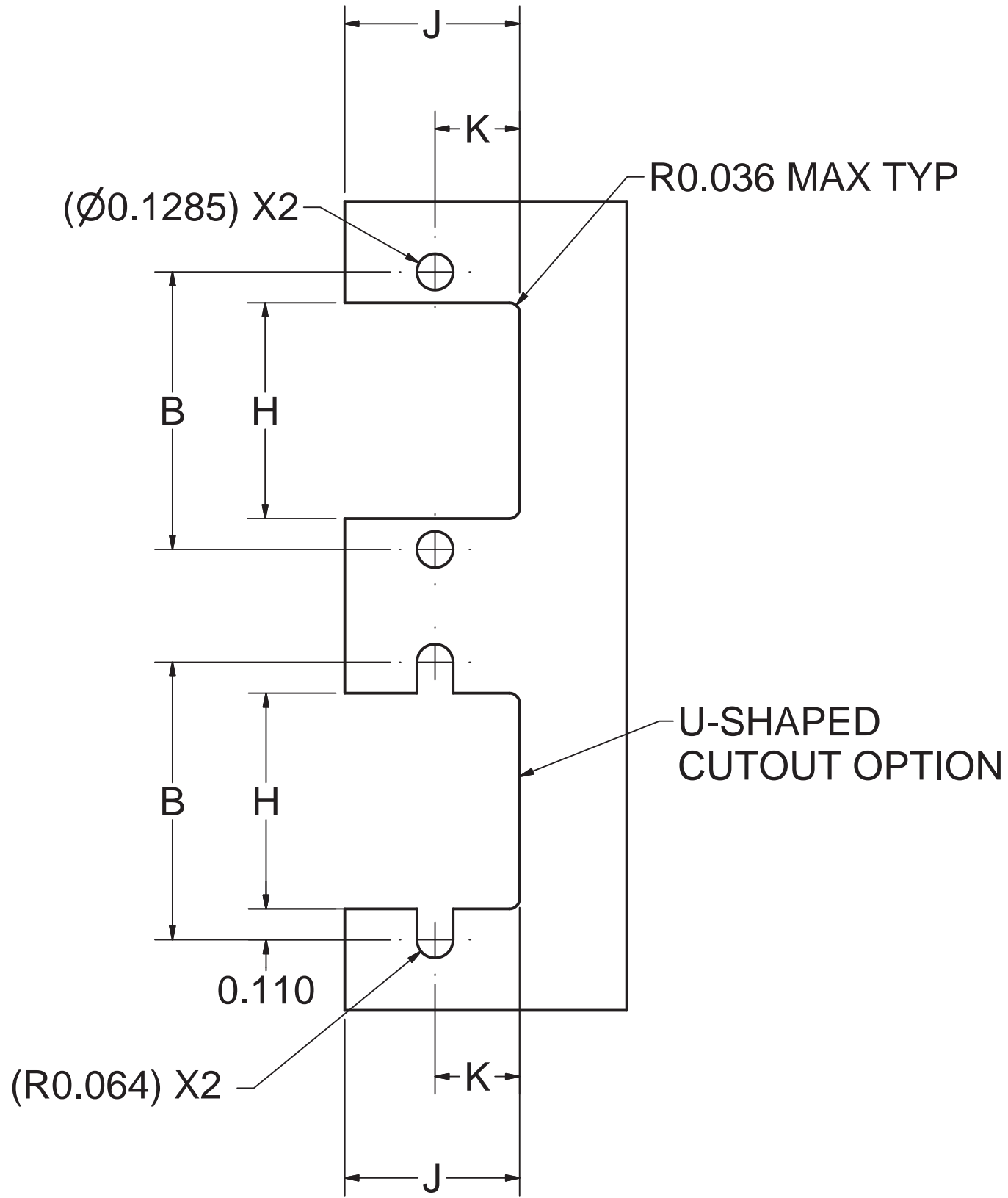


4



#4-40 TAPPED, THRU X2 7

RECESSES FOR CONNECTOR TABS X4



PANEL CUTOUT DIMENSIONS

NOTES:

- DIMENSIONS APPLY AFTER FINISH
- MATERIAL:
2.1. BACKSHELL: ULTEM 2310
2.2. HARDWARE: STAINLESS STEEL
- FINISH: ELECTROLESS NICKEL PLATING PER AMS2404
- PART NUMBER TO READ:
RT-BC0008-XXYCU

COMPOSITE CONSTRUCTED PART

COMPACT DESIGN PART

BACKSHELL SHELL SIZE

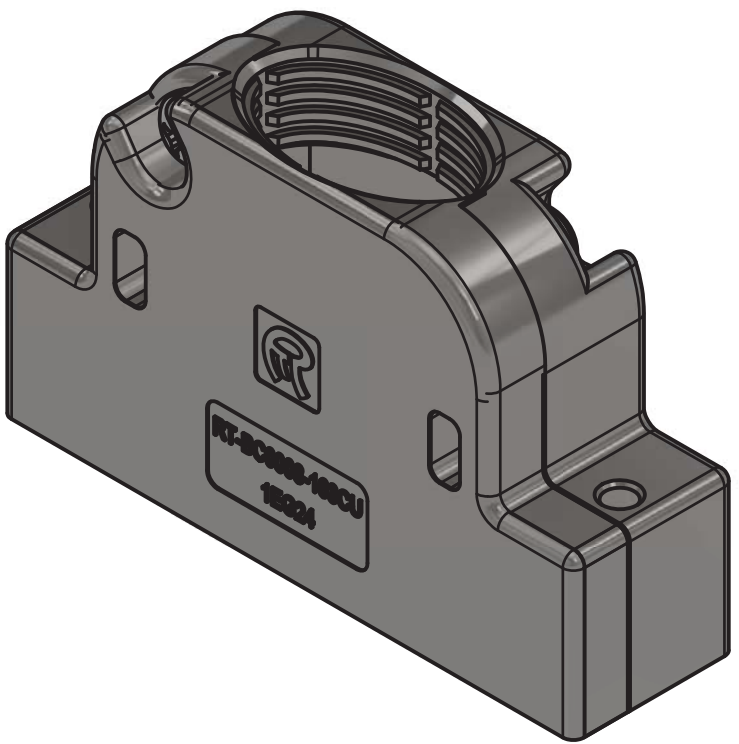
APPROXIMATE EQUIVALENT CABLE ENTRY DIAMETER IN MM

- PACKAGE TO PREVENT DAMAGE, ASSEMBLY HARDWARE INCLUDED
- ALL BACKSHELL KITS TO COME WITH 2 SHELL HALVES, 2 THREAD CUTTING SCREWS FOR SHELL SIZES 1-5, AND 4 THREAD CUTTING SCREWS FOR SHELL SIZE 6. INCLUDED SCREWS TO BE USED FOR ASSEMBLING THE TWO HALVES TOGETHER.
- BACKSHELL KITS DO NOT INCLUDE #4-40 SCREWS
- ALL DASH NO. ARE ROHS COMPLIANT


TABLE 1 4

GENERAL DIMENSIONS

DASH NO.	APPROX EQUIVALENT CABLE EXIT DIAMETER REF. ONLY	CABLE O.D. SIZE	SHELL SIZE	WEIGHT (LBS) REF. ONLY	A MAX	B ±0.005	C ± 0.020	D ± 0.020	E ± 0.020	F ± 0.020	G MAX	H MIN REF. ONLY	J MIN REF. ONLY	K MIN REF. ONLY
-091CU	[9]	0.15 - 0.36	1	0.021	1.240	0.984	0.560	1.300	0.480	0.715	0.750	0.765	0.620	0.290
-092CU	[9]	0.15 - 0.36	2	0.024	1.560	1.312	0.590	1.300	0.730	0.807	1.010	1.030	0.650	0.309
-152CU	[15]	0.30 - 0.58	2	0.024	1.560	1.312	0.590	1.300	0.730	0.807	1.010	1.030	0.650	0.308
-123CU	[12]	0.20 - 0.48	3	0.032	2.110	1.852	0.590	1.300	1.155	0.696	1.485	1.505	0.650	0.306
-163CU	[16]	0.40 - 0.65	3	0.032	2.110	1.852	0.590	1.300	1.155	0.696	1.485	1.505	0.650	0.305
-164CU	[16]	0.40 - 0.65	4	0.041	2.760	2.500	0.590	1.300	1.625	0.935	2.165	2.185	0.650	0.313
-165CU	[16]	0.40 - 0.65	5	--	2.660	2.406	0.680	1.300	1.682	0.807	2.125	2.145	0.740	0.350
-236CU	[23]	0.50 - 0.90	6	--	2.760	2.500	0.706	1.575	1.790	1.063	2.201	2.221	0.766	0.373



BY RUSSTECH ENGINEERING

TECHNICAL REFERENCE				RUSSTECH ENGINEERING COMPANY, INCORPORATED 4416 RUSSELL ROAD, SUITE A MUKILTEO, WA 98275, USA		
UNLESS OTHERWISE SPECIFIED DIMENSIONS ARE IN DECIMAL INCHES WITH METRIC IN BRACKETS TOLERANCES ARE: .X ± 0.1 .XX ± 0.03 .XXX ± 0.010 ANGLES ± 0.5° REMOVE ALL BURRS & SHARP EDGES	APPROVALS		COMPOSITE STRAIGHT EMI BACKSHELL STRIAGHT EXIT, SPLIT SHELL STYLE FOR USE WITH M24308 COMPLIANT CONNECTORS			
	DRAWN BY E. CHUNG 10/17/2024					
	CHECKED BY Wm Bryon Duncan 2025.05.01 09:00:17 -07'00'					
	ENGINEER Edward Chung 2025.05.01 07:33:25 -07'00'					
	APPROVED BY Ben Lebson 2025.05.01 13:05:29 -07'00'					
		SIZE D	CAGE CODE 1EG24	DRAWING NUMBER RT-BC0008-S		REV. A
		SCALE 2 : 1	AUTODESK-INVENTOR		DEPARTMENT SALES	SHEET 1/1